

How to get the MACD off your trigger chart face and back to the space at the bottom where it belongs!
This is really a very easy process, and it never fails if you follow the steps correctly.

Step 1: Pull up the chart with the misplaced MACD. It will look like this:



Step 2: Put your cursor at the edge of any histogram, until it displays a description.



Step 3: Left-click your mouse while hovering as described in step 2.



Step 4: Holding the mouse button down, drag your cursor to the bottom of the chart, where the times are displayed, and release the button while you are on the time area.



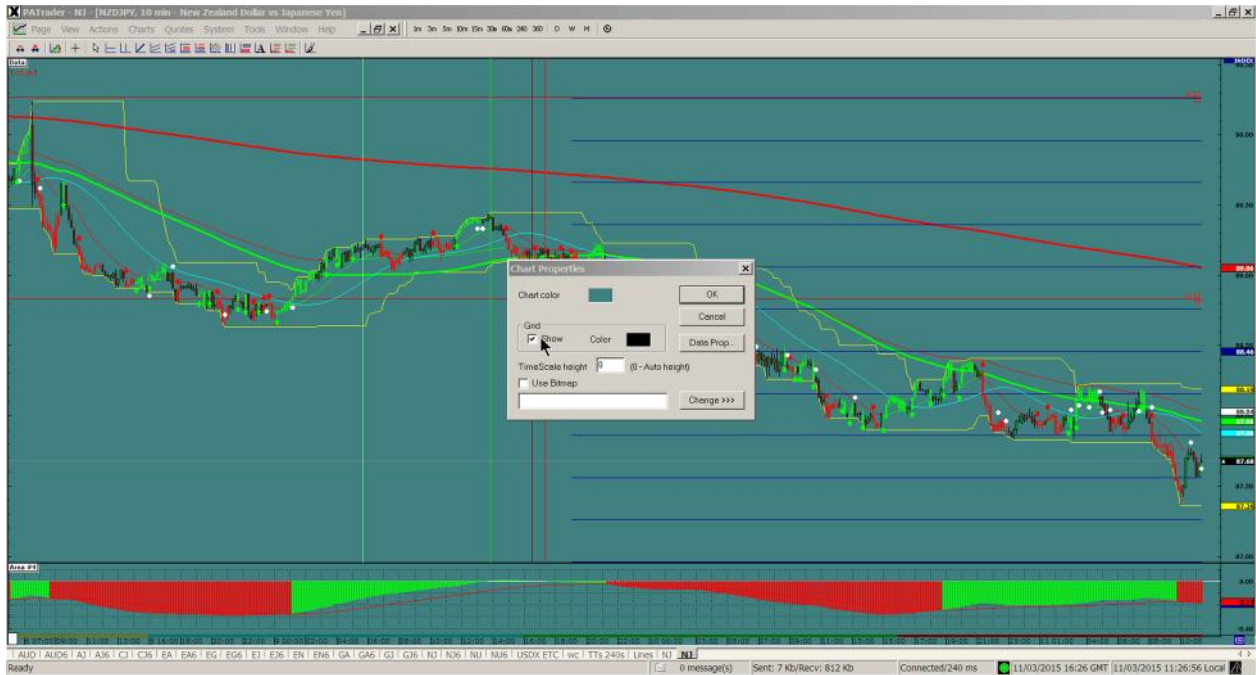
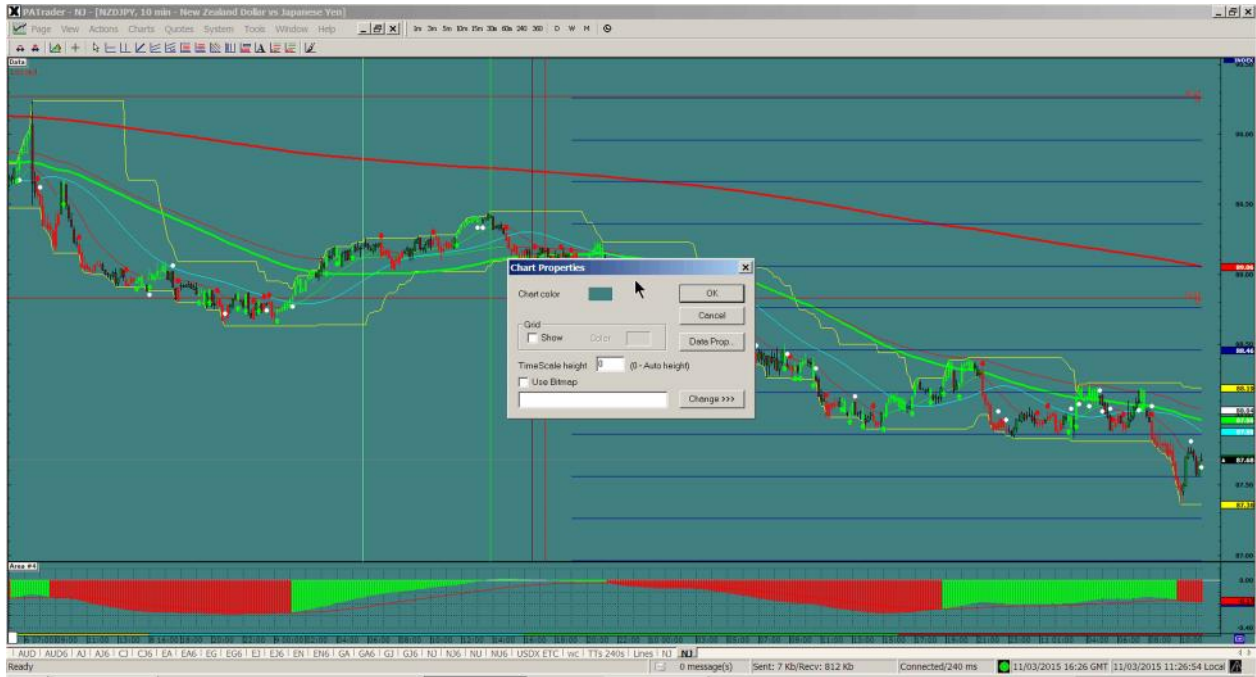
Step 5: Your MACD will now be in the correct location. However, you will also have a grid in the space and the area will have an incorrect label. Proceed on to the remaining 2 steps to correct these items.



Step 6: Place your cursor on the body of the chart in the area of the MACD. Right-click the mouse to bring up the pop-up box. Choose "Chart Properties" from the list.



Step 7: From the Chart Properties pop-up box, click “Grid – Show” and then click OK. This tells the software the grid is displaying. DO not skip this step!



Step 8: Re-open the Chart Properties box as above, and UNcheck “Grid-Show”. Then click OK again. The grid is now gone.



Step 9: In the restored MACD area, at the upper left, right-click on the words “Area #1” (numbers vary) to get the “Rename” pop-up to show.



Step 10: Left click on the word Rename box to bring up the renaming pop-up box. Type in MACD and click OK.



Your charts are now back to their original condition!